



# Residential Tree Removal Guide

## Do You Need A Permit?

1. If the tree is historic and located more than 8' from an existing or proposed dwelling or accessory structure.
2. If the tree is historic and located on a vacant residential lot.
3. If removing more than three non-exempt or protected trees, and must be approved by EQB.
4. Permits are not required when a temporary suspension is in place, during a hurricane, or natural disaster.

**"Call Before You Cut!" (904) 264-2635**

Connect with us on





# Historic & Protected Trees



*Live Oak*



*8" or More\**

\*4" or more for all live oak trees

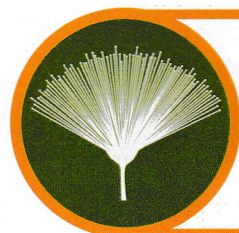
## Exempt Trees



*All Pine Trees*



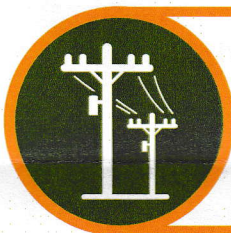
*Pest Infested*



*Nuisance Trees*



*Emergency or Hazard*



*Utility Operations*



**TREE CITY USA®**  
37 YEARS

## Other Requirements

**1.**

One 4" caliper tree is required for every 2,500 square feet with a maximum of 10 trees planted on any residential lot.

**2.**

Must provide proof of exemption. There is no fee for exceptions.

**3.**

All non-exempt removals must be approved by the Environmental Quality Board or Planning & Zoning Board.

**Contact:**

Economic & Community Development  
(904) 264-2635

Code Compliance  
(904) 278-3020